

# INSTALL A LOCAL AUDACY® SYSTEM PROXY

## LIST OF MATERIALS:

59-PROXY-RP01 Audacy Proxy Kit

AC/DC Wall-Mount Power Adapter

Micro SD Card Reader

Micro SD Memory Card



1. In the web Interface SETUP tab, click **DOWNLOAD CLIENT PROXY CONFIG** (config.json)

### AUDACY PROXY DOWNLOADS

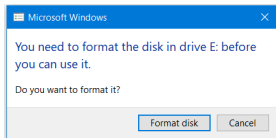
[DOWNLOAD CLIENT PROXY CONFIG](#)

Find the download package for your host server and extract it to an accessible directory. Use the button above to download the custom client configuration file specific to your hardware, and place it in the same directory. On a unix-based system (linux, mac os x) use the following on a terminal:

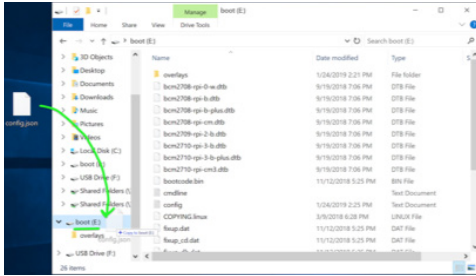
2. Insert pre-formatted SD card provided into computer with the supplied USB adapter.



3. When inserting the SD card into a PC, a prompt will appear asking if you want to format the SD card. Click Cancel.



3. Drag “config.json” onto the USB drive folder labeled “boot.”



4. Insert SD card into local Proxy Server

**Note: Make sure to use the proper orientation**



5. Connect Ethernet to local Proxy Server and power up using provided AC/DC Wall-Mount Power Adapter.



1375 Park Avenue, Sycamore, IL 60178, USA  
(800) 273-9989 | [contactus@audacywireless.com](mailto:contactus@audacywireless.com)  
[www.audacywireless.com](http://www.audacywireless.com)

IS-0035 Rev. 4/19

**AUDACY**  
WIRELESS LIGHTING CONTROL  
YOUR WORLD IN A BETTER LIGHT

A DIVISION OF Eco-Systems Inc.