

### IMPORTANT SAFEGUARDS

When using electrical equipment, basic safety precautions should always be followed including the following:

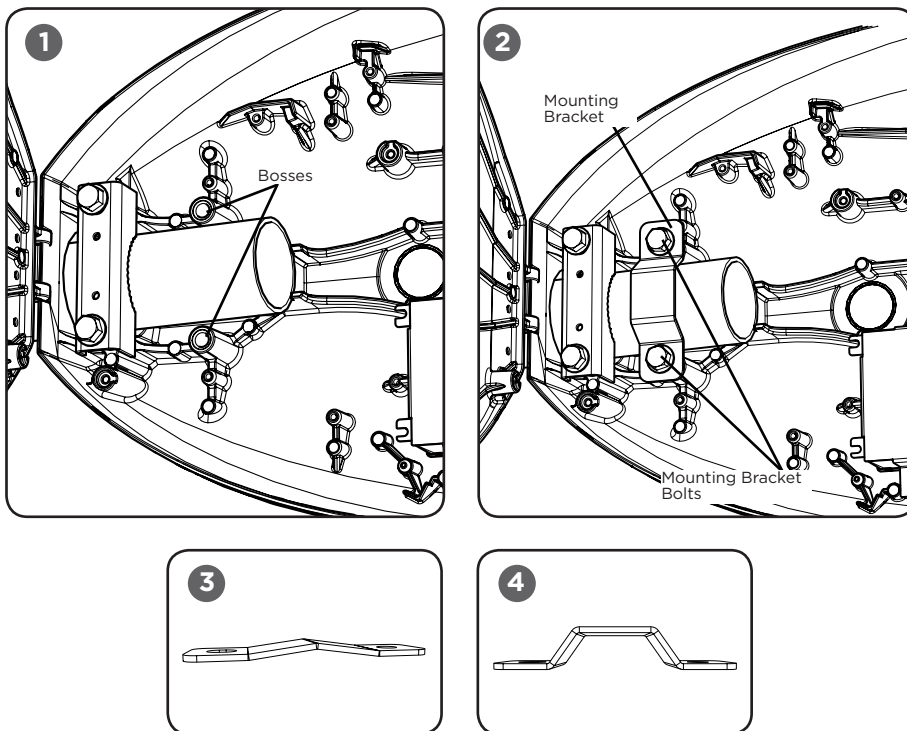
### READ AND FOLLOW ALL SAFETY INSTRUCTIONS

1. To reduce the risk of electrical shock, turn off power supply before installation or servicing.
2. If mounting bolts are completely removed in the field they should be hand threaded (prior to use of power tools) to ensure proper engagement of the thread when re-installing. Failure to pre-start threads may result in cross-threading or stripping of the bolts during reinstallation.

### SAVE THESE INSTRUCTIONS FOR FUTURE REFERENCE

### INSTALLATION INSTRUCTIONS

### TO INSTALL:



### 4 POINT MOUNT INSTALLATION

#### STEP 1:

Open the cover by loosening the captive D-ring and allow the cover to swing open.

#### STEP 2:

Locate (2) Bosses and insert (2) supplied mounting bolts and mounting bracket. See **Figure 1**.

**NOTE:** Kit includes two different size mounting brackets. Use the appropriate size bracket depending on the pipe size, refer to torque value table and **Figure 3 & 4**.

#### STEP 3:

Tighten (2) mounting bolts to the appropriate torque values specified in TORQUE VALUES table to the left (use 9/16" socket wrench). See **Figure 2**.

#### STEP 4:

**IMPORTANT- DO NOT** exceed these torque levels on the mount bolts. Exceeding recommended torque value resulting in excessive deformation of mounting bracket will cause stripping of mount hardware which could lead to an unsafe mounting condition.

TORQUE VALUES			
Pipe Size	Pipe Position	Bolt Torque Required (in-lbs)	Bolt Torque Required (N-m)
1.66 in O.D. (0.162 in mounting bracket) See Fig 3	+5.0 degrees tilt	200	22
	+2.5 degrees tilt	200	22
	0 degrees (no tilt)	200	22
	-2.5 degrees tilt	200	22
	-5.0 degrees tilt	200	22
2.38 in O.D. (0.66 in mounting bracket) See Fig 4	+5.0 degrees tilt	200	22
	+2.5 degrees tilt	200	22
	0 degrees (no tilt)	200	22
	-2.5 degrees tilt	200	22
	-5.0 degrees tilt	200	22