

IMPORTANT SAFEGUARDS

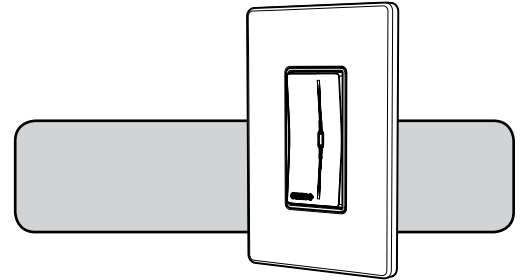
When using electrical equipment, basic safety precautions should always be followed including the following:

READ AND FOLLOW ALL SAFETY INSTRUCTIONS

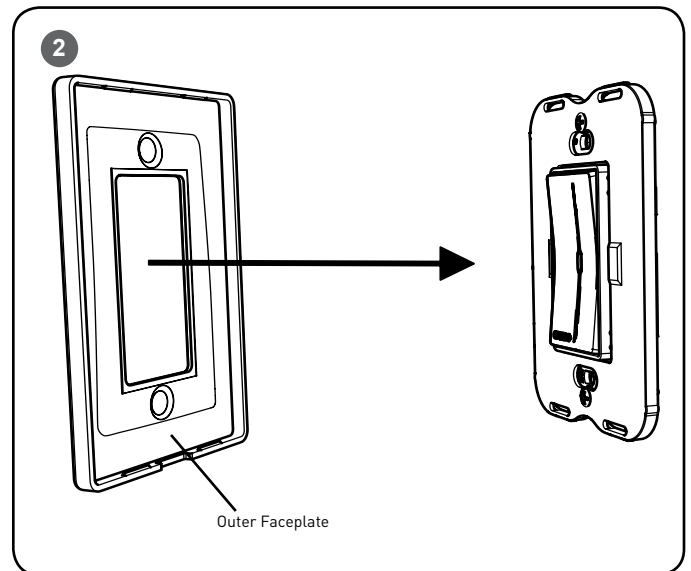
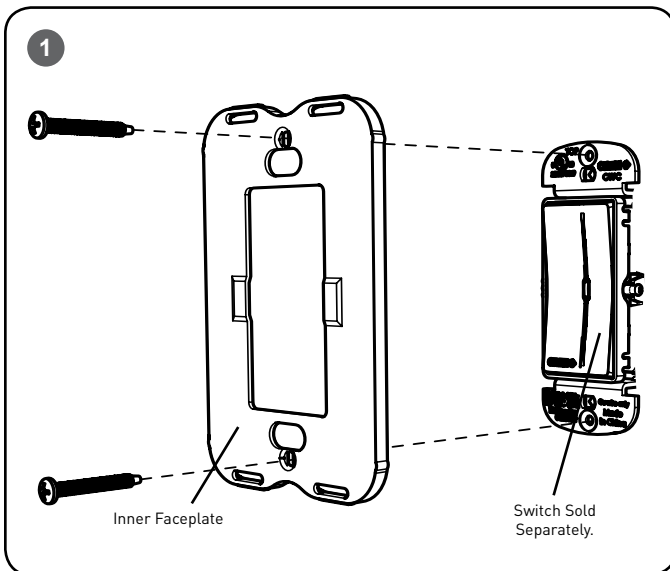
1. Before installing turn off the power at the circuit breaker.
2. Indoor use only and suitable for damp locations.

SAVE THESE INSTRUCTIONS FOR FUTURE REFERENCE

INSTALLATION INSTRUCTIONS INSTRUCTIONS D'INSTALLATION



TO INSTALL:



STEP 1:

Place the Inner Faceplate over the installed switch and secure using the (2) supplied screws. See **Figure 1**.

NOTE: Install (4) supplied screws for double gang inner faceplate and (6) supplied screws for triple gang inner faceplate. Figure 1 shows a single gang inner faceplate.

STEP 2:

Attach the Outer Faceplate over the Inner Faceplate by snapping it into place. See **Figure 2**.